

# *EAGLEEXCEL MTL2* **EE2400, EE2403, EE4800, EE4801, EE4803, EE6000**



## **USER'S MANUAL**

V3.0 – October 2009

[www.eagletronicchargers.com](http://www.eagletronicchargers.com)

# INDEX

- 1. SAFETY INSTRUCTIONS AND WARNINGS.....3**
- GENERAL.....3
- SHOCK PREVENTION.....3
- BURN AND BODILY INJURY PREVENTION.....4
- FIRE AND EXPLOSION PREVENTION.....4
- ARCING AND BURNING OF CONNECTOR.....4
- MEDICAL AND FIRST AID TREATMENT.....4
- 2. DESCRIPTION OF THE CHARGER.....5**
- 3. INSTALLATION OF THE CHARGER.....6**
- AC INPUT CONNECTION.....7
- AC INPUT VOLTAGE SELECTION 3x208/240/480VAC (ONLY FOR EE4803).....7
- AC INPUT VOLTAGE SELECTION 1x240/480VAC (ONLY FOR EE4801).....8
- AC INPUT VOLTAGE SETTINGS.....9
- 4. HOW TO USE THE CHARGER..... 13**
- PROGRAMMING OF THE OPPORTUNITY PAUSE..... 13
- BATTERY CONNECTION – VOLTAGE CHECK AND AUTOSTART..... 16
- CHARGE OPERATION..... 17
- OPPORTUNITY PAUSE..... 18
- SAFETY TIMER – EMERGENCY STOP..... 18
- AUTOMATIC DATA SAVING..... 19
- BLOWN FUSE DETECTION..... 19
- AUTOMATIC CHARGE TERMINATION..... 19
- AUTOMATIC SHUTDOWN ON BATTERY DISCONNECTION..... 20
- EQUALIZE & REFRESH MODES..... 20
- MANUAL CHARGE TERMINATION..... 23

# 1. SAFETY INSTRUCTIONS AND WARNINGS

Before to start using your *EAGLEEXCEL MTL2* battery charger, please take the time to read these instructions carefully.

The owner's manual is an important part of the charger. It's recommended to keep it in good condition for the lifetime of the charger. It should be kept in a dry and clean place, always available to the users.

To indicate important instructions, the following blocks are used throughout this manual.

## CAUTION!

**This operation can be dangerous for the user.**

## ATTENTION!

**This operation is important for the functionality and reliability of the charger.**

## GENERAL

Battery charging products can cause serious injury or death, or damage to other equipment or property, if the operator does not strictly observe all safety rules and take precautionary actions.

Safe practices must be learned through study and training before using this equipment. Only qualified personnel should install, use, or service this equipment.

## SHOCK PREVENTION

Bare conductors, or terminals in the output circuit, or ungrounded, electrically-live equipments can fatally shock a person. To protect against shock, have competent electrician verify that the equipment is adequately grounded and learn what terminals and parts are electrically HOT.

The body's electrical resistance is decreased when wet, permitting dangerous current to flow through the body. Do not work in damp area without being extremely careful. Stand on dry rubber mat or dry wood and use insulating gloves when dampness or sweat cannot be avoided. Keep clothing dry.

**INSTALLATION AND GROUNDING** - A power disconnect switch must be located at the equipment. Check the data label for voltage and phase requirements. If only 3-phase power is available, connect single-phase equipment to **ONLY TWO WIRES** of the 3-phase line.

**DO NOT CONNECT** the equipment grounding conductor to the third live wire of the 3-phase line as this makes the equipment frame electrically HOT, which can cause a fatal shock.

If a grounding conductor is part of the power supply cable, be sure to connect it to a properly grounded switch box or building ground. If not part of the supply cable, use a separate grounding conductor. Don't remove a ground prong from any plug. Use correct mating receptacles. Check ground for electrical continuity before using equipment. The grounding conductor must be of a size equal to or larger than the size of the line conductors.

**CHARGING LEADS** – Inspect leads often for damage to the insulation. Replace or repair cracked or worn leads immediately. Use leads having sufficient capacity to carry the operating current without overheating.

**BATTERY TERMINALS** – Do not touch battery terminals while equipment is operating.

**SERVICE AND MAINTENANCE** – Shut OFF all power at the disconnect switch or line breaker BEFORE inspecting, adjusting, or servicing the equipment. Lock switch OPEN (or remove line fuses) so that the power cannot be turned ON accidentally.

Disconnect power to equipment if it is to be left unattended or out of service. Disconnect battery from charger. Keep inside parts clean and dry. Dirt and/or moisture can cause insulation failure. This failure can result in high voltage at the charger output.

### **BURN AND BODILY INJURY PREVENTION**

The battery produces very high currents when short circuited, and will burn the skin severely if in contact with any metal conductor that is carrying this current.

Do not permit rings on fingers to come in contact with battery terminals or the cell connectors on top of the battery. Battery acid is very corrosive. Always wear correct eye and body protection when near batteries.

### **FIRE AND EXPLOSION PREVENTION**

When batteries are being recharged, they generate hydrogen gas that is explosive in certain concentrations in air (the flammability or explosive limits are 4.1% to 72% hydrogen in air). The spark-retarding vents help slow the rate of release of hydrogen, but the escaping hydrogen may form an explosive atmosphere around the battery if ventilation is poor.

The ventilation system should be designed to provide an adequate amount of fresh air for the number of batteries being charged. This is essential to prevent an explosion. Always keep sparks, flames, burning cigarettes, and other sources of ignition away from the battery recharging area. Do not break "live" circuits at the terminals of batteries. Do not lay tools or anything that is metallic on top of any battery.

### **ARCING AND BURNING OF CONNECTOR**

To prevent arcing and burning of the connector contacts, be sure the charger is OFF before connecting or disconnecting the battery. The ammeter should NOT indicate current flow.

### **MEDICAL AND FIRST AID TREATMENT**

First aid facilities and a qualified first aid person should be available for each shift for immediate treatment of electrical shock victims.

**EMERGENCY FIRST AID:** Call physician and ambulance immediately and use First Aid techniques recommended by the American Red Cross.

#### **DANGER: ELECTRICAL SHOCK CAN BE FATAL.**

If person is unconscious and electric shock is suspected, do not touch person if he or she is in contact with charging equipment, battery, charging leads, or other live electrical parts. Disconnect power at wall switch and then use First Aid.

Dry wood, wooden broom, and other insulating material can be used to move cables, if necessary, away from person.

**IF BREATHING IS DIFFICULT,** give oxygen.

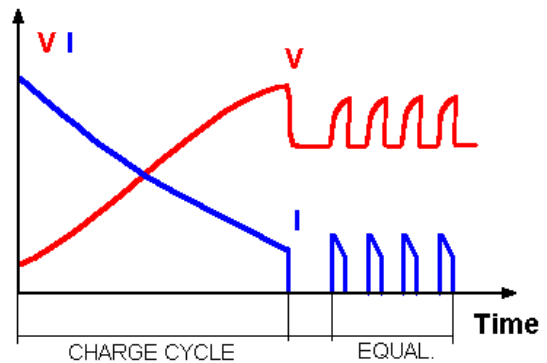
**IF NOT BREATHING, BEGIN ARTIFICIAL BREATHING,** such as mouth-to-mouth.

**IF PULSE IS ABSENT, BEGIN ARTIFICIAL CIRCULATION,** such as external heart massage.

In case of acid in the eyes, flush very well with clean water and obtain professional medical attention immediately.

## 2. DESCRIPTION OF THE CHARGER

*EAGLEEXCEL MTL2* battery chargers have been designed to charge Lead-Acid batteries. These units convert the AC input to a DC output at the correct voltage. The charge curve is of the type WoWa.



The operation of the *EAGLEEXCEL MTL2* chargers is managed by the new MTL2 Digital Charge Controller, which is a microprocessor based electronic board of the last generation. Important features of the MTL2 Digital charge controller are:

- Easy Programming by DIP switches.
- Programmable Gassing Voltage.
- Proportional Algorithm for charge time calculation.
- Programmable Equalize System (Automatic Pulsed & Manual).
- Automatic voltage-controlled maintenance.
- Wrong battery detection.
- Battery desulphation cycle.
- Independent safety timer.
- Automatic data-saving in case of black out of the mains.
- Cyclical indication of V/cell, AMPS, Ah returned, time.
- Cool down time counter.
- Scrolling messages in plain text.

The MTL2 Charge Controller monitors the entire charging curve, and it incorporates several safety features.

The front panel of the MTL2 Digital charge controller contains the digital display (4-Digits), the STOP button and the MANUAL-EQUALIZE button.

## 3. INSTALLATION OF THE CHARGER

### Conditions of use:

- Operating temperature: 5°C to 45°C
- Storage temperature: -20°C to 60°C
- Relative humidity: less than 75%

### CAUTION!

#### Risk of electrical shock!

The charger can be installed by qualified personnel only.

To prevent fire or shock hazard, do not expose the unit to rain or moisture.  
Don't use the unit in presence of flammable gas, because it can generate sparks.

### ATTENTION!

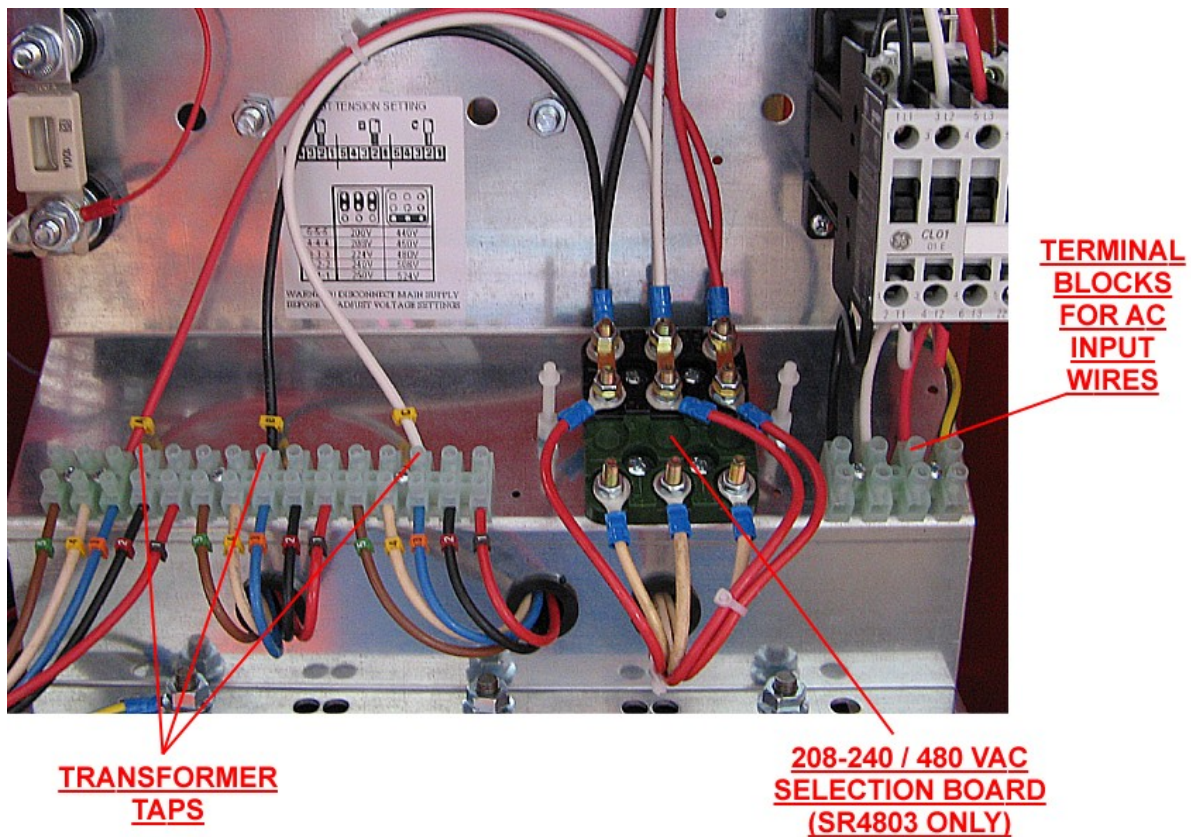
Make sure that the unit's maximum input power (reported on the data label) is available from your power supply, and verify that the unit's operating voltage is correct.

Allow adequate air circulation to prevent internal heat buildup.

Don't place the unit near heat sources such as radiators or air ducts, or in a place subject to direct sunlight, excessive dust, mechanical vibration or shock.



**AC INPUT CONNECTION**



The charger must be connected to the AC input using an adequate cable and plug, with disconnect switch and fuses.

The AC input wires have to be connected to the TERMINAL BLOCKS FOR AC INPUT WIRES, that are located on the internal panel, just under the AC input contactor.

Make sure to tighten the terminal block screws with the proper torque, and pull each wire separately in order to verify that they are mounted properly.

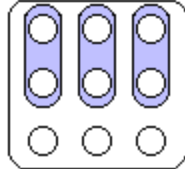
**AC INPUT VOLTAGE SELECTION 3x208/240/480VAC (ONLY FOR EE4803)**

The model EE4803 can be configured for 208/240 VAC or 480 VAC nominal input voltage.

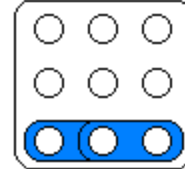
This selection can be made with the 208/240 - 480 VAC SELECTION BOARD, that is located on the internal panel, near the terminal blocks for the AC input wires.

- Disconnect the charger from main supply and battery.
- Remove the plastic protection over the 208/240 - 480 VAC SELECTION BOARD.
- Remove the three metal bars.
- Place the metal bars in the required position, with ref to the following pictures.
- Tighten the nuts with the proper torque.
- Apply the plastic protection.
- Connect the charger to main supply.

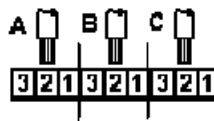
**SELECTION BOARD  
IN POSITION  
3x208-240 VAC**



**SELECTION BOARD  
IN POSITION  
3x480 VAC**



**INPUT TENSION SETTING**



3-3-3	208V	452V
2-2-2	225V	480V
1-1-1	240V	506V

**WARNING!! DISCONNECT MAIN SUPPLY  
BEFORE TO ADJUST VOLTAGE SETTINGS**

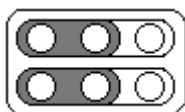
### **AC INPUT VOLTAGE SELECTION 1x240/480VAC (ONLY FOR EE4801)**

The model EE4801 can be configured for 1x240 VAC or 1x480 VAC nominal input voltage.

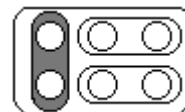
This selection can be made with the 240 / 480 VAC SELECTION BOARD, that is located on the internal panel, near the terminal blocks for the AC input wires.

- Disconnect the charger from main supply and battery.
- Remove the plastic protection over the 240 / 480 VAC SELECTION BOARD.
- Remove the two metal bars marked in grey in the following pictures..
- Place the metal bars in the required position, with ref to the following pictures.
- Tighten the nuts with the proper torque.
- Apply the plastic protection.
- Connect the charger to main supply.

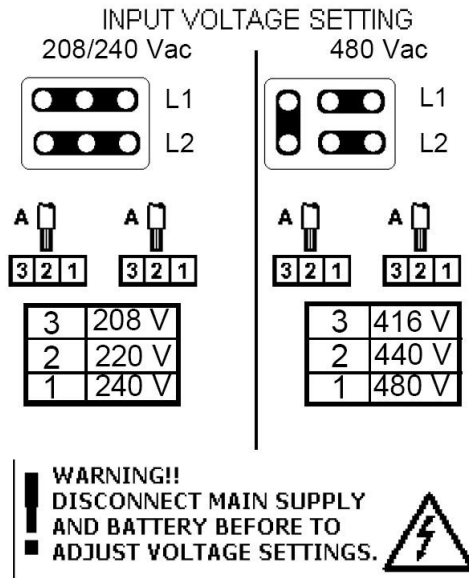
**SELECTION BOARD  
IN POSITION  
1x240 VAC**



**SELECTION BOARD  
IN POSITION  
1x480 VAC**







## AC INPUT VOLTAGE SETTINGS

### ATTENTION!

The proper setting of the power transformer taps is fundamental for the correct operation of the *EAGLEEXCEL MTL2* chargers.

If the real AC input voltage is different than the AC nominal voltage to which the charger is set, the charging current of the charger may be significantly different than the nominal.

- The **POWER TRANSFORMER TAPS** and the label with the list of the 3 **NOMINAL** voltages that are available, are located on the left side of the internal panel.

	<i>EE2400</i>	<i>EE4801</i>	<i>EE2403</i>	<i>EE4803</i>	<i>EE4800</i>	<i>EE6000</i>
1	1x240VAC	1x240VAC – 1x480VAC	3x240 VAC	3x240VAC - 3x506VAC	3x490VAC	3x 610 VAC
2	1x220VAC	1x220VAC – 1x440VAC	3x220 VAC	3x225VAC - 3x480VAC	3x480VAC	3x 600 VAC
3	1x208VAC	1x208VAC – 1x416VAC	3x208 VAC	3x208VAC - 3x452VAC	3x460VAC	3x 575 VAC

- Using an adequate AC-voltmeter, measure the value of the **REAL** AC input voltage available at the mounting location of the charger.
- Identify which of the 3 **NOMINAL** voltage values is closest to the **REAL** measured value.

*Example 1:* for a charger *EE2400* (singlephase) if the measured voltage is 212 VAC, the transformer should be connected to the tap number 3, that corresponds to 208 VAC

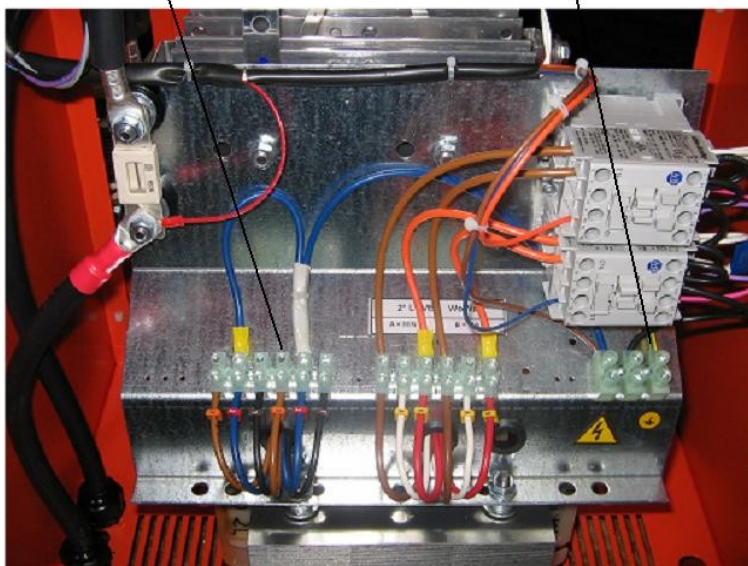
*Example 2: for a charger EE6000 (threephase) if the measured voltage is 608 VAC, the transformer should be connected to the tap number 1, that corresponds to 610 VAC*

- For the singlephase units (EE2400 - EE4801), the wires to be moved are the TWO , marked with the letters “A” and “A”.
- For the threephase units (EE2403 - EE 4800 - EE4803 – EE6000), the wires to be moved are the THREE , marked with the letters “A”, “B” and “C”.

### ***Singlephase units (EE2400)***

**POWER  
TRANSFORMER  
TAPS**

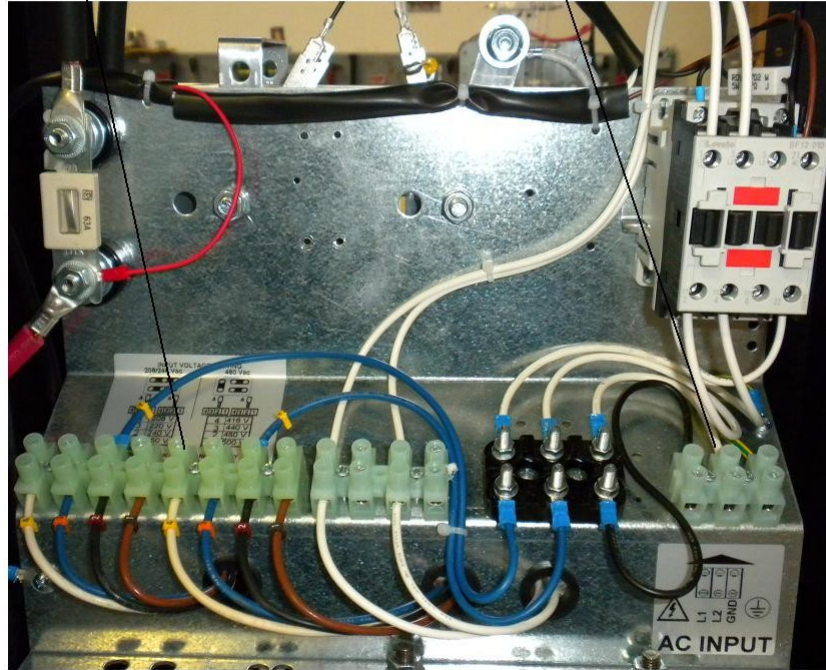
**TERMINAL BLOCK  
FOR AC INPUT CABLE**



***Singlephase units (EE4801)***

**POWER  
TRANSFORMER  
TAPS**

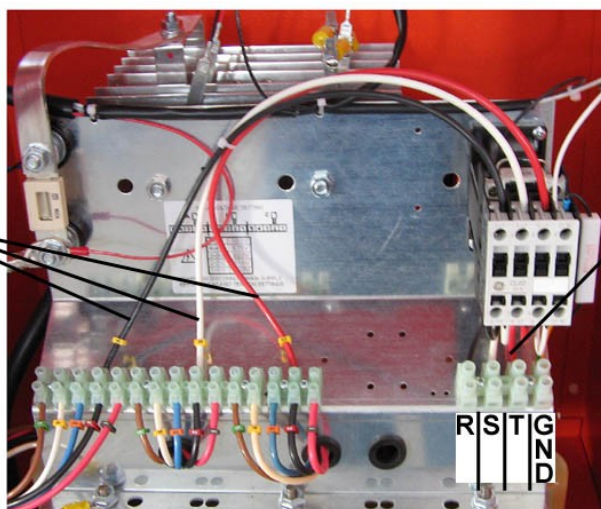
**TERMINAL  
BLOCK FOR  
AC INPUT**



***Threephase units (EE2403)***

**POWER  
TRANSFORMER  
TAPS**

**TERMINAL  
BLOCKS FOR  
AC INPUT CABLE**

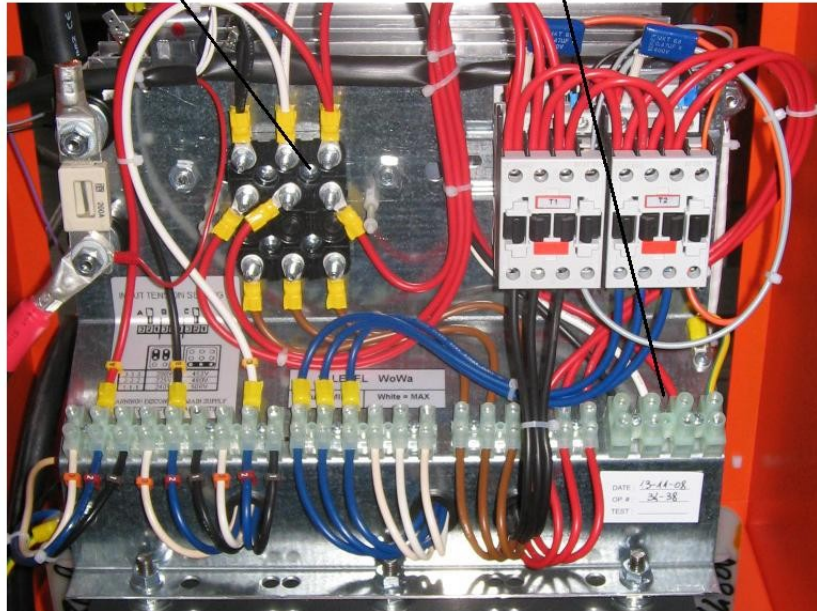




***Threephase units (EE4803)***

**POWER  
TRANSFORMER TAPS**

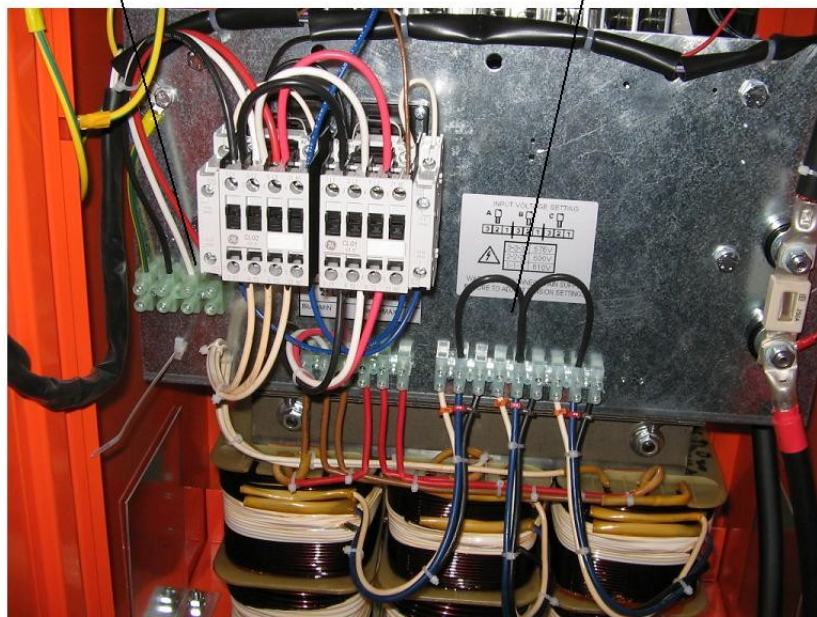
**TERMINAL BLOCK  
FOR AC INPUT CABLE**



***Threephase units (EE4800 - EE6000)***

**TERMINAL BLOCK FOR  
AC INPUT CABLE**

**POWER TRANSFORMER  
TAPS**

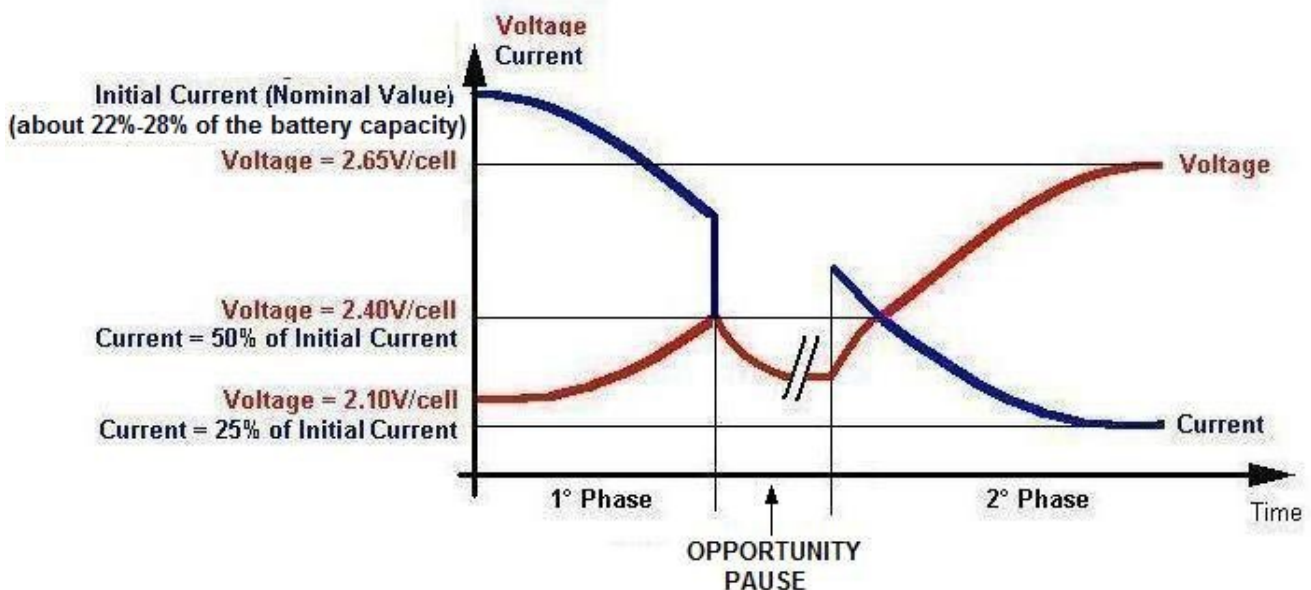


## 4. HOW TO USE THE CHARGER



### PROGRAMMING OF THE OPPORTUNITY PAUSE

On the Eagle Excel charger, the charge current follows the WoWA curve, as described in the norm DIN 41773.



The charge curve WoWa is divided in two charge phases.

The first phase starts from the beginning of the charge and finishes when the battery voltage reaches the gassing point (2.40V/cell).

The current value, during the first phase, is 22-28% of the battery capacity. This allows to reduce the charge time.

The second phase starts from the gassing point until the end of the charge .

During the second phase the current value is reduced to avoid overheats in the battery, and the charge continues in the same way of standard Wa models (SR series).

The Eagle Excel chargers allow to set a pause time between the first and the second phase of charge.

This pause can be used to implement the OPPORTUNITY CHARGE.

The Electronic Control Board allows the setting of the following pause:

- \*) 0 hour ( the charge works as a normal charger that implement the WoWa charge curve)
- \*) 1 hour
- \*) 2 hour
- \*) 3 hour

The pause time have to be chosen longer than the maximum working pause that the forklift can have during a normal work-shift.

If this occurred, during the work shift, it's always possible to take advantage of the pause when the forklift is not used, to recharge the battery.

The Eagle Excel will charge the battery until the gassing point than it stops. This avoids the battery gassification and thus the production of dangerous gasses.

During the night the charger will execute the first phase of charge , the Opportunity Pause and the second phase. The charge will be fully completed.

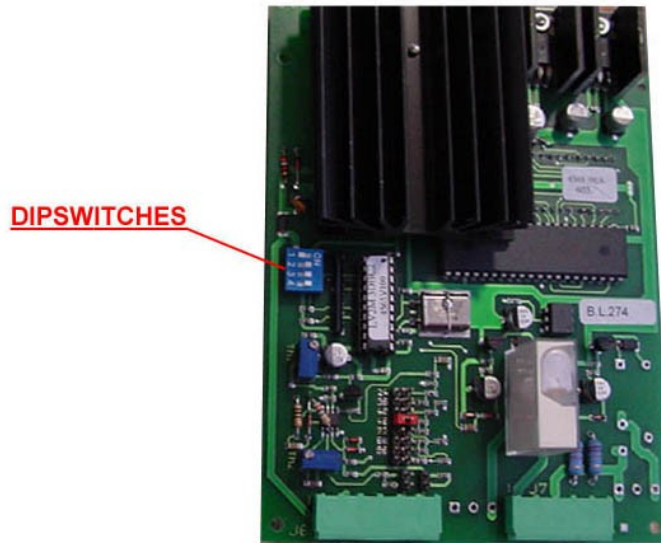
Setting correctly the Opportunity Pause and taking advantage of the working pause, it's possible to cover 2 work-shift ( 8 hours + 8 hours ) with the same forklift without change it or its battery.

The OPPORTUNITY PAUSE between the first and the second phase of charge can be modified by moving two dip-switches 2 and 3 that are located on the MTL board, near the microprocessor and the black heatsink (see next picture).

To modify the value, follow these steps:

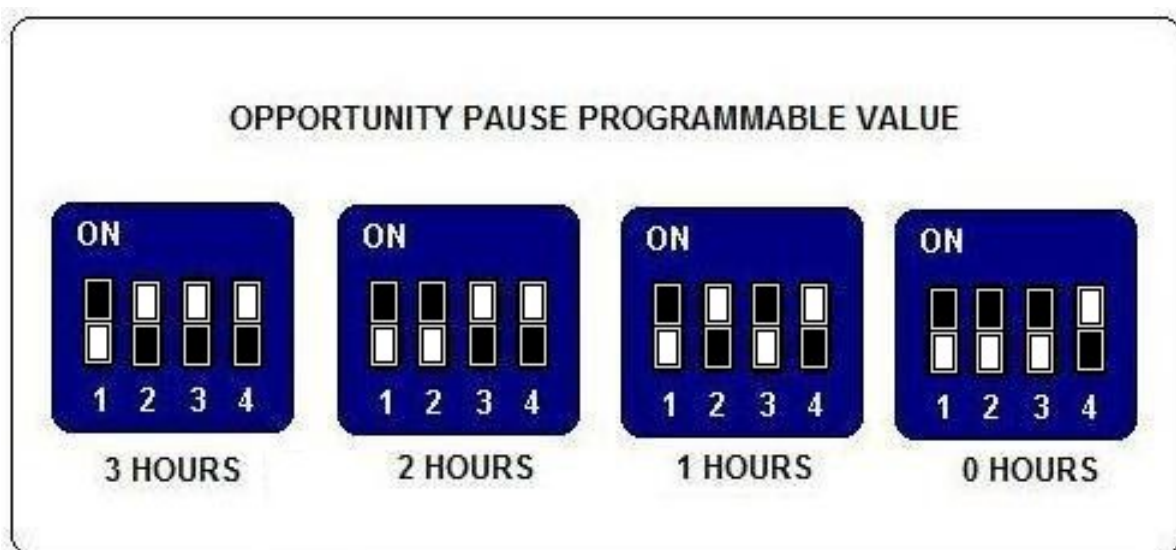
- Disconnect the charger from main supply and battery.
- Locate the dip-switches on the digital electronic board (see next picture).
- Set the dip-switches according with the following table and pictures.
- Connect the charger to main supply.

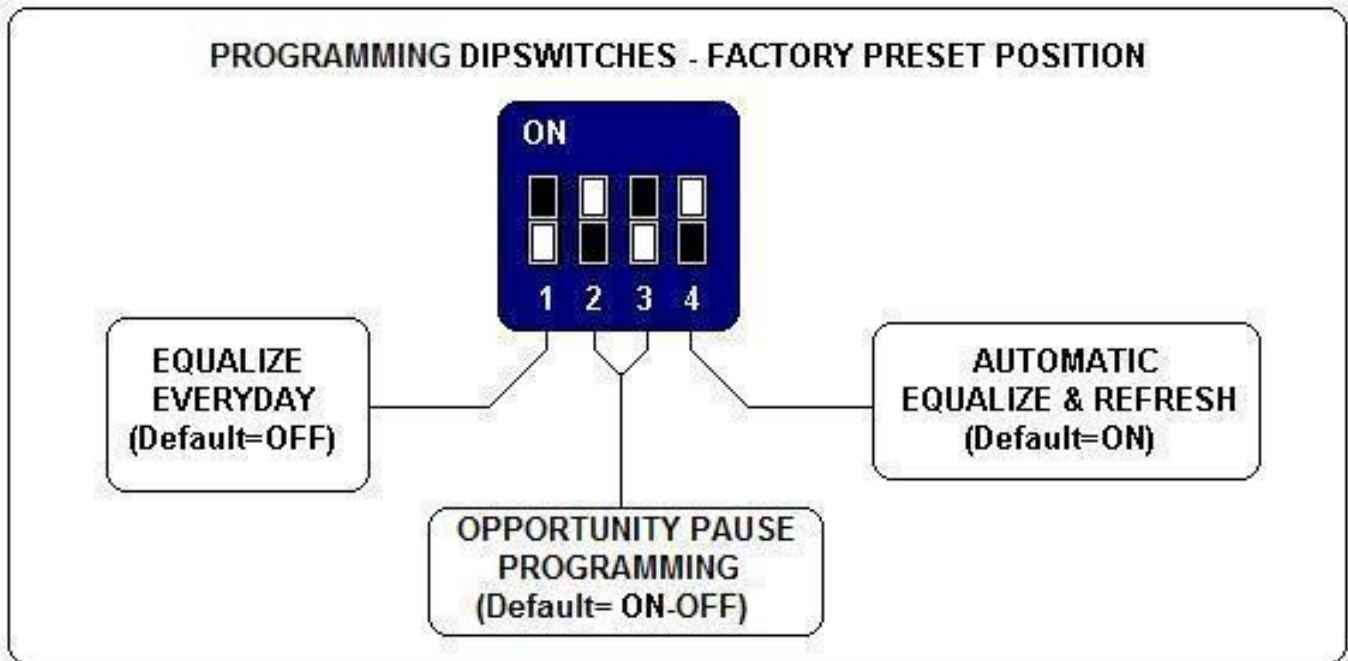




DS #2	DS #3	OPPORTUNITY PAUSE
OFF	OFF	0 hour
ON	OFF	1 hour
OFF	ON	2 hours
ON	ON	3 hours

When a battery will be connected to the charger, the programmed Opportunity Pause will be shown on the display during the startup sequence.





The other dip-switches 1 and 4 are used to set the daily and/or the weekly equalization.

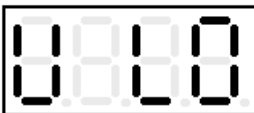
**BATTERY CONNECTION – VOLTAGE CHECK AND AUTOSTART**

**ATTENTION!**

Eaglexcel *MTL2* chargers are programmed to execute a complete cycle of charge automatically, however it's recommended to survey the operations when the battery remains connected to the charger for more than 12 hours (example: week-ends).

Connect the battery to the charger, using an adequate plug.  
When the battery is correctly connected, the display turns on and shows the battery voltage.

If the battery voltage is lower than the minimum threshold of 1,62 V/cell, the charger doesn't start, and the display will show the error message "Voltage Low":



If the battery voltage is higher than the maximum threshold of 2,60 V/cell, the charger doesn't start, and the display will show the (flashing) error message "Voltage High":



If the voltage of the battery is between the minimum and maximum thresholds, the charger will wait for 3 seconds before to start charging, while the display will show the programmed Opportunity Pause.



If, during the charge, the voltage of the battery exceeds the maximum threshold of 2,80 V/cell, the charger shuts down automatically, and the error message “Voltage High” will appear on the display.

## CHARGE OPERATION

When the charge is started, the digital display will start showing the following parameters:

- Voltage per cell of the battery (U) (Volt);
- Charge current; (A) (Ampere);
- Capacity charged; (C) (Ah);
- Time of charge. (h) (Hours);

During all the charge cycle these parameters are displayed in sequence, as indicated in the picture.

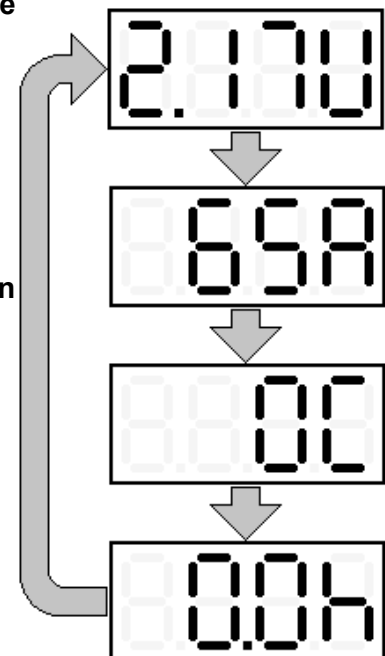
The letter (U-A-C-h) indicates which parameter being is displayed.

To display the time, the charger uses this format:

(HOURS) . (MINUTE DECADES) h

Examples:

Time of charge 3h 30minutes:      Displayed 3.3h  
Time of charge 7h 50minutes:      Displayed 7.5h



When the battery reaches the gassing voltage, the charge stops and waits for the end of the Opportunity Pause. When the Opportunity Pause finishes or it has been set equal to 0 hour the second (final) phase of charger begins.

The second phase will be ON for one half of the time needed to reach the gassing voltage (time of first phase), with a minimum total time of 30 minutes.

**Examples:**

- if the battery reaches the gassing voltage in 1 minute, the second phase will be ON for 30 minutes.
- if the battery reaches the gassing voltage in 5 hours, the second phase will be ON for 2 hours and 30 minutes.
- if the battery reaches the gassing voltage in 10 hours, the second phase will be ON for 5 hours.

- *If the battery reaches the gassing voltage in 11h59m59s, the second phase will be ON for 5h 59m59s (this is the maximum total time allowed before going to Emergency state).*

*These time limits are ok to use the charger with different battery capacities (depending on the time available for the charge, from 8 to 16 hours), and it's not needed to do adjustments on the board.*

### OPPORTUNITY PAUSE

During the Opportunity Pause the display shows the battery voltage and the remaining pause time.

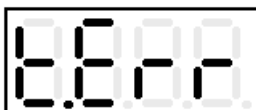


When the Opportunity Pause finishes the display shows:



### SAFETY TIMER – EMERGENCY STOP

- If the battery doesn't reach the gassing voltage within 12 hours, the charge is terminated by the safety timer, and the display shows the error message "Time Error":



If this error message appear, it's recommended to call the service for a complete check of the system.

The cause if this problem may be a wrong setting of the input voltage: if the input is set to a certain value (for example: 610 V) but the real voltage is lower (for example: 575 V), the

charging current will be significantly lower than the nominal value, thus causing a longer time to reach the gassing voltage.

### **AUTOMATIC DATA SAVING**

- If, during the charge or equalization, one or more black-outs of the mains happen, the microprocessor automatically saves all the relevant informations about the state of the charge.

While the input power is absent and the battery is connected to the charger, the display will show the message “Black Out”:



- When the power supply will be available again, the charger will re-start automatically from the exact point of interruption, and the charge will be normally completed.

### **BLOWN FUSE DETECTION**

- If the output fuse is blown or absent, the display will show the message “Fuse”:



This message may appear also if the battery has been left discharged for long time, causing the sulphation process on the plates.

### **AUTOMATIC CHARGE TERMINATION**

#### **CAUTION!**

**NEVER disconnect the battery while it's being charged.  
Disconnecting the battery while it's being charged is hazardous  
for the user and voids the charger warranty.**

- When the charge is complete, the charger shuts down, and the display shows the scrolling message “End Elapsed x.x h”.



The time indicated by the display is the time elapsed after the charge has been terminated.

This indication is useful when there are two or more forklift operated with FIFO (First In First Out) rotation: when the user picks up a forklift, he will always chose the one with highest he time elapsed after charge termination.

The final values of Voltage/cell, time of charge and capacity charged remain stored in memory. If the red STOP pushbutton is pressed, the display will show these values in sequence.

### **AUTOMATIC SHUTDOWN ON BATTERY DISCONNECTION**

#### **CAUTION!**

**NEVER** disconnect the battery while it's being charged.  
Disconnecting the battery while it's being charged is hazardous  
for the user and voids the charger warranty.

If the battery is disconnected while the charge is in progress, the EagleExcel MTL2 switches off automatically.

### **EQUALIZE & REFRESH MODES**

#### **ATTENTION!**

The proper programming of the equalize & refresh modes is important  
for the correct operation of the *EAGLEEXCEL MTL2* chargers.

Only expert users should modify these settings.

EagleExcel MTL2 chargers have a complete set of programmable equalize & refresh functions:

- **MANUAL EQUALIZE:** 4 hours extension of the charge time (selected by user)
- **DAILY EQUALIZE:** 4 hours extension of the charge time (everyday)
- **AUTO EQUALIZE & REFRESH:** Weekly equalize cycle + long term battery refresh

### **MANUAL EQUALIZE**

The **MANUAL EQUALIZE** function is intended for the users that prefer to manage the equalization of the batteries personally.

It will extend the time of the charge cycle by 4 hours, and it can be enabled by pushing the apposite button, located on the right side of the front panel, during the first minutes of charge.



The display will add the message “Eq. On” to the cyclical visualization of the charge parameters, and the charge will proceed normally.



Once the manual equalize has been selected, the only way to deselect it is to disconnect and re-connect the battery.

### **DAILY EQUALIZE**

The **DAILY EQUALIZE** function will extend all the charge cycles by 4 hours, and it's suitable to recover batteries that are lightly sulphated.

It can be enabled by moving the internal DIPSWITCH #1 to position ON (see the description of the programming dipswitches in the previous paragraphs).

The **DAILY EQUALIZE** function is **DISABLED** by default.

Since the **DAILY EQUALIZE** is a very intense equalize program and may tend to overcharge the battery, it's recommended to limit it to short periods, then to return to a normal equalize program.

It's also recommended to survey the operation of the charger and keep the temperature of the battery under precise control while the **DAILY EQUALIZE** function is enabled.

### **AUTO EQUALIZE + REFRESH**

The **AUTO EQUALIZE + REFRESH** function is totally managed by the MTL2 microcontroller.

It can be enabled by moving the internal DIPSWITCH #4 to position ON (see the description of the programming dipswitches in the previous paragraphs).

The **AUTOMATIC EQUALIZE + REFRESH** is **ENABLED** by default.

If the charge has been completed normally, the charger will add 5 short additional charge cycles of 30 minutes, with 14 hours and 30 minutes interval between each charge.

During the time interval between each equalization charge, the display will show the scrolling message: “End Elapsed x.x h”:



When the equalization charge is in progress, the display will show the scrolling message: “equalization charge”:



followed by the indication of the charge current.

### **REFRESH OPERATION**

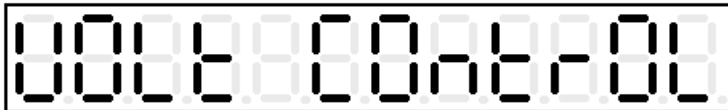
If a battery is not used for a long time (example: seasonal works, holiday periods), it should be kept well charged to avoid a reduction of performance, therefore it's very important to charge the battery before leaving it in stock for more than 24 hours.

The self-discharge process makes it harder to keep a battery charged when the time of stocking is longer (weeks or months). The REFRESH function is useful to keep the battery in perfect condition when it's not used for an indefinite time.

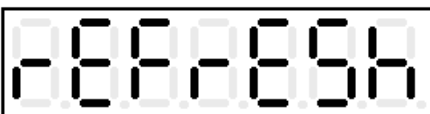
It is sufficient to leave the battery connected to the charger after the charge and the equalization is complete.

The *EagleExcel MTL2* microprocessor will keep the battery voltage under control and will activate the charger automatically if the voltage drops below a predefined minimum threshold.

While the battery is monitored by the charger, the display will show the scrolling message "Volt Control":



If the voltage drops down below the minimum threshold, the charger will give an extra charge cycle to keep the battery in perfect condition, and the display will show the scrolling message: "Refresh".



Each Refresh charge terminates when the battery voltage reaches a predefined maximum threshold.

- **NOTE:** With this "voltage controlled" refreshing system, the battery will be kept in perfect condition for an undefined time, without any risk of undercharge or overcharge. If the battery is in ideal condition (self-discharge absent) the refresh charge will never be activated. In the opposite case, if the battery is in bad condition and the self-discharge is significant, the refresh charge will be often activated and the battery will be kept charged without problems.

**MANUAL CHARGE TERMINATION****CAUTION!**

**NEVER disconnect the battery while it's being charged.  
Disconnecting the battery while it's being charged is hazardous  
for the user and voids the charger warranty.**

While the charge is in progress, it's possible to shut down the charger by pressing the red button "MANUAL STOP" on the front panel.

The display will show the message "Stop":



- The final values of Voltage/cell, Time of charge and Capacity Charged remain stored in memory. If the "MANUAL STOP" button is pressed again, these values will be displayed in sequence.

When the charge is terminated manually, the equalization and refresh functions are automatically disabled.